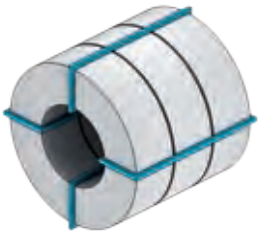


Standard packaging

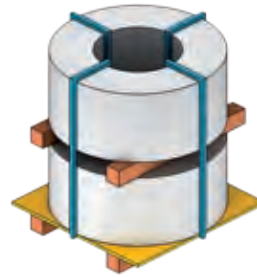
Exemples d'emballages standard



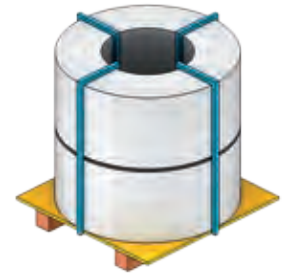
BN1 / C



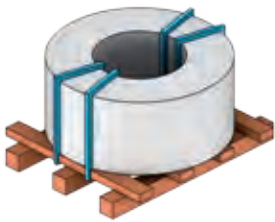
BN2 / C / M



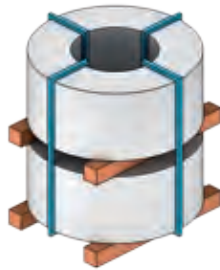
BN3 / 1-2-3-4-5-6



BN4 / 1-2-3



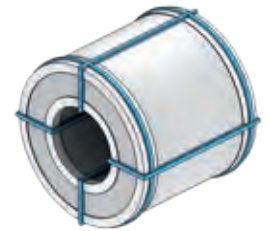
BN6 / 1-2-3-4-5



BN7 / 1-2-3-4-5-6



BN8 / 1-2-3



BN1M

	BN1	BN2	BN3	BN4	BN6	BN7	BN8
Eye-to-side <i>Axe horizontal</i>	●						
Eye-to-side cradle <i>Axe horizontal sur berceau</i>		●					
Eye-to-sky pallet <i>Axe vertical sur palette</i>			●	●			
Wood pieces <i>Emballage sur 2 bois</i>						●	●
Pallet 8x8 <i>Palette 8x8</i>					●		
20-mm spacers <i>Intercalaires 20 mm</i>			(1)		(1)	(1)	
40-mm spacers <i>Intercalaires 40 mm</i>			(2)		(2)	(2)	
80-mm spacers <i>Intercalaires 80 mm</i>			(3)			(3)	
Plastic protection for wood pieces <i>Protection plastique des bois</i>			(4)	(1)	(3)	(4)	(1)
Plastic film <i>Film plastique</i>			(5)	(2)	(4)	(5)	(2)
Bitumen and poly-coated paper <i>Papier goudronné et polyéthylène</i>	(C)	(C)	(6)	(3)	(5)	(6)	(3)
Metal box <i>Caisse métallique</i>	(M)	(M)					

NON-STANDARD
PACKAGING
IS DEVELOPED
ACCORDING TO
CUSTOMER REQUEST

*EMBALLAGES
SPÉCIFIQUES
PROJETÉS ET
FOURNIS EN
ACCORD AVEC
LE CLIENT*

